



Codeshilp Global Solutions Pvt. Ltd.

Unmanned Weighbridge Software

Unmanned Weighbridge Software Automates The Weighing Process, Eliminating The Need For A Manual Operator. It Enables Vehicles To Be Weighed Without Human Intervention, Often Using RFID Technology And Automated Systems For Data Capture And Management. These Systems Streamline Operations, Reduce Errors, And Enhance Efficiency In Various Industries, Including Mining.

About Unmanned Weighbridge System

Codeshilp Global Solutions Pvt. Ltd. Provide Two Way Weighbridge Automation System, Two Way means vehicle enter both side for weighment. also we can pre fix weighbridge for weighment if they try another weighbridge system cannot allow to weighment.

The Unmanned Weighbridge System is a standalone system which allows 24 hours 7 days a week Weighing Operations without the need of operator. Due to the system's easy interface it is totally operated by the truck driver. Moreover Codeshilp Global Solutions Pvt. Ltd. custom designs the system to suit the specific requirements of your operations.

Codeshilp Global Solutions Pvt. Ltd. Weighbridge Automation System Software is a intelligent solution that turns your weighbridge Fully Secure, Automated and Operator Less Means eliminating the need of weighbridge operator. The system can be customized with many add-ons like camera plate recognition, Surveillance Cameras, Traffic Barriers, Traffic Lights, etc.

Feature List

- Unmanned Weighbridge Software.
- Iot Based UMS Controller
- Robust and weather-proof stainless steel cabinet for added protection with optional climate control.
- CCTV Camera Supporting.
- Data accuracy with pre-programmed vehicle data using RFID card readers or Touch panel with user friendly interface.
- Improved facility control and security with traffic barriers, traffic lights, surveillance cameras etc.
- Weighing Data Management Software interacting with Codeshilp Company scale terminals provides instant access to critical business information such as operational analysis, billing and inventory control.
- Touch Panel Terminal - for accurate and quick data input
- Detection Loops or Photo cells - to automatically detect vehicles and transfer of details.
- Traffic Lights - For safe operation
- Exit & Entry Barriers - For security and arranging vehicle traffic.
- Truck Plate Recognition - For clear identification of vehicles and loads.
- Surveillance Cameras - For increased security

System Integrate :

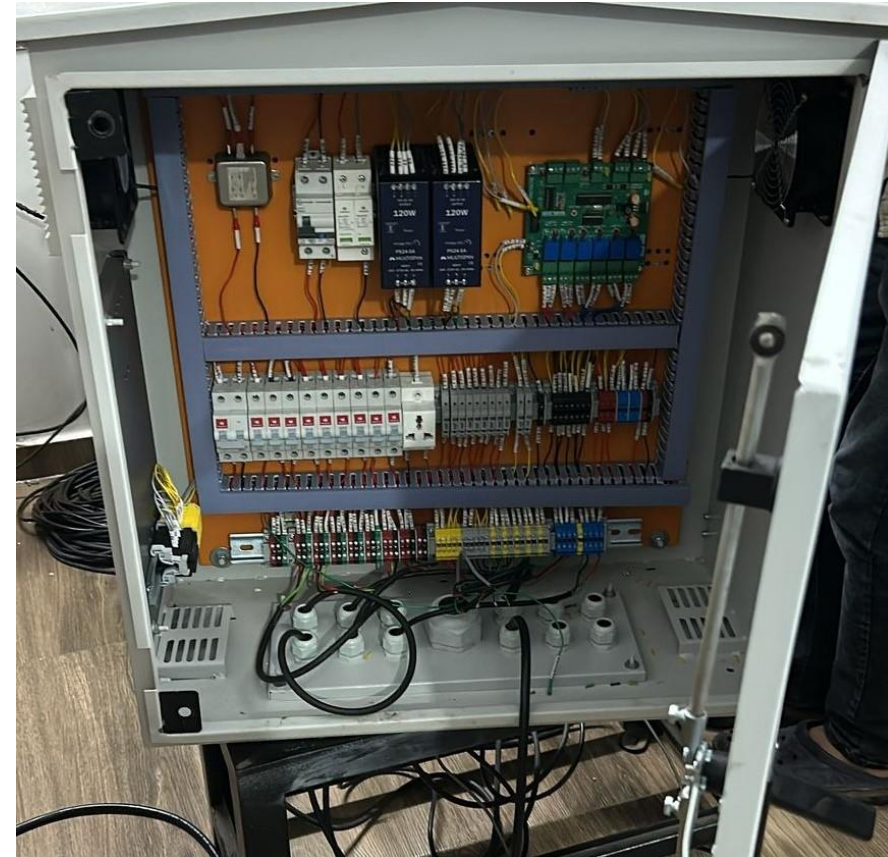
- Iot Based UMS Controller
- Vehicle Position System
- CCTV Camera & Photo Capturing
- Barrier Security system
- Instruction Announce with loud speaker
- Integrate with SAP, Oracle, ERP, Tally, Odoo, Microsoft Dynamic
- RFID Integration
- Barcode Integration
- PLC Based Intelligent Indicator
- Traffic light indication
- Photo sensor based system
- Automatic vehicle weighing software

We Believe in Product Quality and Customer Satisfaction, We Provide Solution Based on Customer Requirement.

- ❖ **Iot Controller:-** Iot Controller Manage All Instrument Also Remove PC and Operator From Weighbridge Office.
- ❖ **RFID Reader:-** RFID Reader Use For Vehicle Unique Identity, We Use HF RFID And UHF RFID Technology For Automation.
- ❖ **CCTV IP Camera:-** CCTV Camera Capture Automatically Vehicle Image At The time of Weight Save On Server.
- ❖ **Boom Barrier:-** Boom Barrier Make Sure Vehicle Complete Weighment and then Go for Next Process. Fix Barrier on Weighbridge.
- ❖ **PA Sound:-** PA Sound Announce Instruction For Driver As Per Require and Make Smooth Process. Alert Set AS per Local Language.
- ❖ **Traffic Light:-** Traffic Light RED/Green Use For Manage Vehicle Traffic at Weighbridge Weighing Time. Go For Green, Red To Stop.
- ❖ **LED Display:-** Driver Verify Live Weight and His Vehicle Number on LED Display, After Confirm Accept Weight and Save Weight.
- ❖ **Vehicle Position Sensor:-** Ensure Vehicle Position On Weighbridge By Sensor and Allow To Save Weight



WCP Panel



- **Type** : Wall/Floor Mounted Metal Enclosure
- **Material** : CRCA Sheet Steel, 14/16 gauge
- **Finish** : Powder Coated (RAL 7035 or as specified)
- **Ingress Protection** : IP54
- **Cable Entry** : Bottom/Side with cable glands
- **Mounting** : Wall/Surface Mount with brackets or screws
- **Door** : Hinged, with lockable latch and rubber gasket for sealing
- **SPD (Surge Protection Device)** : Class II, 275V AC, 20kA minimum per phase, with indication
- **MCB (Miniature Circuit Breaker)** : ISI marked, 6A–32A, 10kA breaking capacity, individual MCB for each load
- **RCBO (Residual Current Breaker with Overload)** : 30mA sensitivity, 2P, 6–32A rating, ISI certified
- **EMI Filter** : 250V AC, minimum 10A, two-stage, metal enclosure
- **SP (Switching Point) for Each Device** : Modular ON/OFF switches with labels for:
- **Input Voltage** : 230V \pm 10%, 50Hz AC

- **Max Load Capacity** : 2 kW (customizable based on devices)
- **Isolation** : Provided via MCB/RCBO
- **Earth Terminal** : Brass strip with minimum 10 connections
- **Control Interface** : Ethernet (RJ45) / RS232
- **Output Channels** : 6 Relay Outputs (NO/NC contacts)
- **Relay Rating** : 10A @ 250V AC / 30V DC
- **Input Channels** : 6 Digital Sensor Inputs
- **Supported Devices** : Boom Barrier, Traffic Light, RFID, Alarm, Gate Motor, ANPR, Human Detection etc.
- **Sensor Types** : Vehicle Detector, IR Beam, Limit Switch, etc.
- **Control Logic** : Programmable via Web Interface / Modbus / Serial Commands
- **Power Supply** : 12V or 24V DC (as per model)
- **Operating Voltage Range** : 9V–28V DC
- **Indicators** : LED indicators for Power, Inputs, Outputs, and Communication
- **Connectivity** : Modbus TCP/IP, Serial Command Set (RS232)

DC Boom Barrier 6MTR

- **Power Supply** : I/P-220V AC Single Phase, O/P-24V C 7.5A
- **Motor Rated Power** : 150W, 24V DC
- **Motor Type** : BLDC
- **Motor RPM** : 1400 RPM
- **Duty Cycle** : > 5 Million times
- **Open / Closed Time**: 6 Sec. Adjustable for DIFF.
- Boom Length
- **N.W** : 45KG
- **Barrier Dimension** : 980(H) X 320 (W) X 240 (D) MM
- **Barrier Extra Feature** : Open Green LED / Closed
- Red LED On Barrier Head
- **Telescopic Boom Length** : FIX Part - 130.5 INCH(3.3MTR)
- **Telescopic Part (3M) Boom Material Detail** : Aluminum With White Coli our Powder Coated



Boom Barrier 4MTR

- **Power Supply** : I/P-220V AC Single Phase, O/P-24V C 7.5A
- **Motor Rated Power** : 150W, 24V DC
- **Motor Type** : BLDC
- **Motor RPM** : 1400 RPM
- **Duty Cycle** : > 5 Million times
- **Open / Closed Time** : 6 Sec. Adjustable for DIFF.
- Boom Length
- **N.W** : 45KG
- **Barrier Dimension** : 980(H) X 320 (W) X 240 (D) MM
- **Barrier Extra Feature** : Open Green LED / Closed
- Red LED On Barrier Head
- **Telescopic Boom Length** : FIX Part - 130.5 INCH(3.3MTR)
- **Telescopic Part (3M) Boom Material Detail** : Aluminum With White Coli our Powder Coated



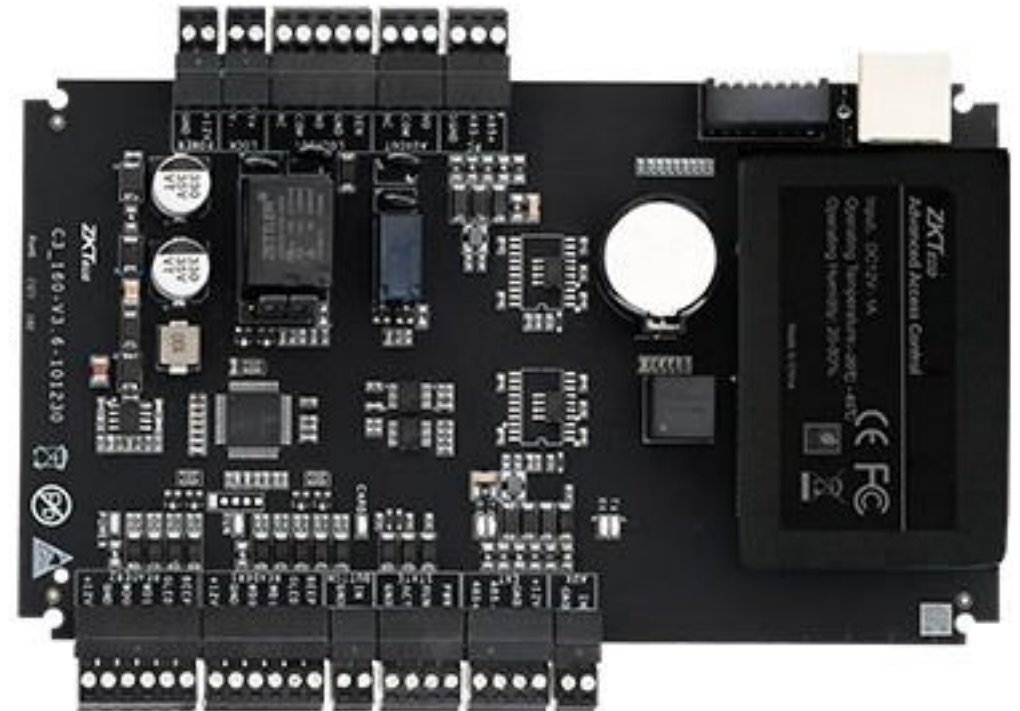
UHF Reader 6M

- Read Range up to 6 meters (adjustable)
- **Read Sensitivity** : Dual Polarization read mode
- Wiegand 26-Bit (Can change to 34-Bit via Software)
- **Two working mode** : Trigger read & Always read
- Comes with the mounting plate and RS-232 cable provide Indicator Buzzer
- Weather Proof (IP65)
- **Maximum Cable Distance** : 100M



C3 100 Pro Controller

- **No of Doors Controller** : One
- **No of Reader Supported** : Two
- **Type of Readers Supported** : 26-bit Wiegand, others upon request
- **No of Input** : 2 (Exit Device and Door Status)
- **No of Output** : 2 (1-Form C Relay for Lock and 1-Form C Relay for Aux Output)
- **Cards Holder Capacity** : 30,000
- **Log Event Capacity** : 100,000
- **Weight** : 0.30 KG
- **Communication** : TCP/IP and RS-485
- **Encloser** :Power coated aluminum
- **Mounting** : Wall Mounting
- **Power Supply** : 12 DC, 1.5 A
- **Dimension** : (L) 175, (W) 99mm



Indicator Traffic Signal

- Technical Specification
- **Size** : 300 MM Dimeter
- **Auto / Manual** : Fully Automatic Operate
- **Color** : Red and Green (2 IN 1)
- **Power Consumption** : 24 W
- **Operating Voltage** : 24 Hour Operate
- **Body** : Tough Polycarbonate Unbreakable Body IP65
- **LED** : 5 MM High Brightness LED
- **LED Nos** : 412 Nos



LPR / ANPR Weighbridge Software

- Automatic Number Plate Recognition (ANPR) cameras play a vital role in unmanned weighbridge installations and associated traffic management systems across a broad spectrum of industries.
- Tare Weight & Net Weight – Automatic Calculation
- Customer Database
- Material Database – with price per Ton Kg
- Source – Destination Database
- Multiple Weighbridge Integration
- IP Camera Integration – Security (Weighbridge software with ANPR camera)
- VAT (Value Added Tax) Integration
- Reports Analysis – | Material | Customer | Transaction | Location | In-Out Status | Total Amount | Total VAT
- SQL Database | MS Access Database – Compatible with local network communication.



Positioning Sensor

- This automation system is use full for vehicle proper position on weighbridge. System integrate with PLC/Controller Based Intelligent terminal, that terminal manage photo/IR censored and find out vehicle position and make further process for weighment.
- Weighbridge software all the feature included in this software, also we provide custom based software solution in weighing line.



Port RS-232 USB-High Speed Serial Converter Specifications

USB

- **Compliance:** Compatible with USB2.0 and USB1.x
- **Connector:** USB type A
- **Speed:** 12 Mbps (Full-Speed USB)
- **I/O Address:** Assigned by BIOS
- **IRQ:** Assigned by BIOS
- **FIFO:** 64 bytes

Serial Interface

- **Connectors:** DB9 male
- **Baud-rate:** 50 bps to 460.8Kbps
- **Data Bits:** 5, 6, 7, 8
- **Parity:** None, Even, Odd, Space, Mark
- **Flow Control:** RTS/CTS, XON/XOFF



Serial Signals

- **RS-232:** TxD, RxD, RTS, CTS, DTR, DSR, DCD, GND
- **Serial Line Protection**
- **ESD Protection:** 15 KV embedded for handshake line.600W surge protect for TXD,RXD signal

Driver Support

- **Operating Systems:** Windows (2000, XP x86/x64, 2003 x86/x64,Vista x86/x64), WinCE 6.0, Linux 2.6 x86/x64

Physical Characteristics

- **Housing: ABS + PC Weight:** 100g(no package)
- **Dimensions:** 60 x 35 x 17mm (The USB Cable length is 1000mm)

Environmental Limits

- **Operating Temperature:** -40 to 70°C (-40 to 158°F)
- **Operating Humidity:** 5 to 95% RH
- **Storage Temperature:** -40 to 85°C (-40 to 185°F)



Some of our valuable Clients



Wholly owned by Cooperatives



5000+ More Customers are engaged with us from 15+ Countries

Thank You

Contact us:

+91 95379 68736

+91 72010 53285

info@codeshilp.com

www.codeshilp.com

Ahmedabad, Gujarat, India